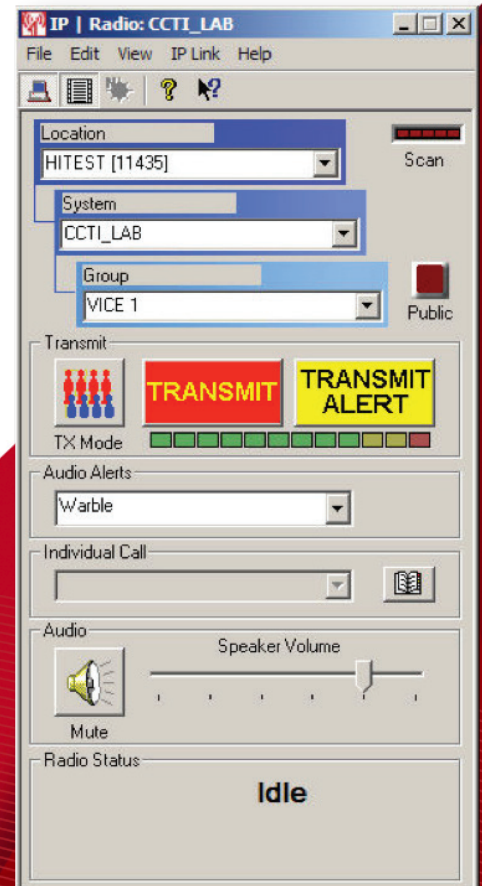


# Desktop Dispatch™

## Radio Control over IP from your Desktop or Laptop

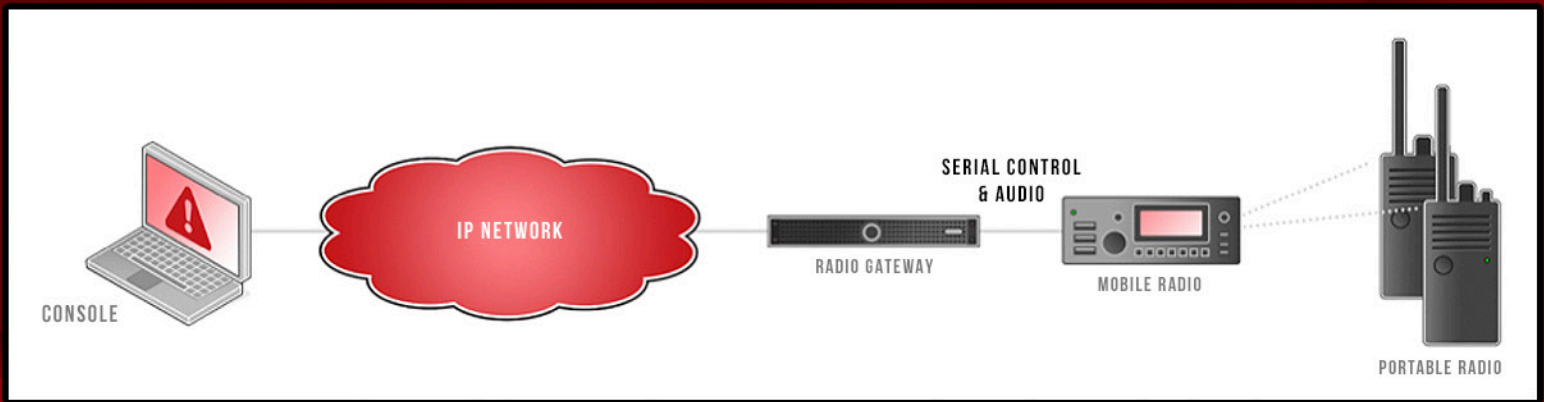
Catalyst provides Voice over IP solutions for land mobile radio users that improve the reach, quality and frequency of communications between field and dispatch personnel.

Our Desktop Dispatch™ solution is designed to supplement existing dispatch operations, excellent for backup and/or radio monitoring applications. Desktop Dispatch™ allows anyone using a standard personal computer with a microphone and speakers to communicate over their existing department or agency network to field personnel using portable and mobile radios.



## Catalyst Desktop Dispatch™ System Advantages

- **Powerful yet Intuitive user interface. Advanced capabilities that you would not expect such as decoding Unit ID's and identifying emergency messages.**
- **Ideal for supplementary and backup dispatch applications, primary dispatch for smaller systems, or for supervisor monitoring in place of expensive desksets.**
- **Interface to virtually every manufacturers radio system including standard wireline (P25 CSSI, P25 DFSI, DMR AIS, SIP, etc.) and donor radio digital protocols (Harris, Kenwood, EF Johnson, BK Technologies) and Tone Control (Motorola, others) through Catalyst Gateway technology.**
- **Deploy new positions rapidly. Compact, lite application.**
- **Designed for low bandwidth requirements. Communicate over LTE, cellular, satellite or other commercial wireless networks.**
- **Sum audio from multiple systems, change channels remotely, and connect disparate radio systems through a single user interface.**



A remote personal computer with headset, speakers, microphone and Desktop Dispatch™ RCoIP software translates the voice and radio control into packets that are sent over the IP backbone network. The Radio Gateway translates these packets back into voice and control signals and interfaces to the radio, which sends the voice call out over the air.

Caller	Callee	Type	Time	Date	Duration	Rec	Status	System	Play
Delayed TX	Forest Net	SimulSelect	08:28:21	05/1...	5 Sec		Delayed TX	Mark Twain...	✓
Forest Net	Forest Net	Group	08:28:15	05/1...	2 Sec		Receive	Mark Twain...	✗
jacobs	Forest Net	SimulSelect	08:28:07	05/1...	5 Sec		IP Radio TX	Mark Twain...	-
rjones	Forest Net	Group	08:27:53	05/1...	6 Sec		IP Radio TX	Mark Twain...	-
Delayed TX	Forest Net	SimulSelect	08:27:48	05/1...	6 Sec		Delayed TX	Mark Twain...	✓
Blue Buck ...	Blue Buck...	Group	08:27:35	05/1...	9 Sec		Receive	Mark Twain...	✓
jacobs	Blue Buck...	SimulSelect	08:27:23	05/1...	5 Sec		IP Radio TX	Mark Twain...	-
Forest Net	Forest Net	Group	08:27:19	05/1...	7 Sec		Receive	Mark Twain...	✗
Connect Lo...	Attention		08:26:57	05/1...	N/A		Connect	Mark Twain...	-
Disconnect ...	WARNING		08:26:45	05/1...	N/A		Disconnect	Mark Twain...	-

The CALL HISTORY window displays the last 32 calls and provides full audio playback at the click of a mouse.

Location	Group/...	System	Time	Date	Type	Status	Rin
LGRAMA03-1	CHNL-A	D2 TA...	11:51:0...	10/16/12	Group	Idle	No
IPT_vMDC_593	CH1 33...	Blah	12:03:2...	10/11/12	None	Idle	No
192.168.0.153					None	Disc...	No
IPR_5918_SVR	LPD DISP	LYNCH	11:49:5...	10/16/12	Group Scan	Idle	No
192.168.0.155					None	Disc...	No
192.168.0.156					None	Disc...	No
192.168.0.157					None	Disc...	No
192.168.0.158					None	Disc...	No
192.168.0.160					None	Disc...	No

The GLOBAL VIEW window shows a Dispatcher all the connected Gateways and their current status.

## System Requirements

- Windows® 10 OS
- 8GB RAM, 500MB hard drive, Intel® i5 or similar processor
- Full Duplex Sound card w/ Drivers Installed
- Network Interface Card (NIC) w/ Drivers Installed
- Compatible with a wide variety of microphones, speakers, headsets and footswitches



Catalyst Communications  
Technologies  
107 Vista Centre Drive  
Forest, VA 24551

Phone: 1 (434) 582-6146  
Support: info@catcomtec.com