

# Case Study – Catalyst Communications Partners With Federal Land Management Agencies



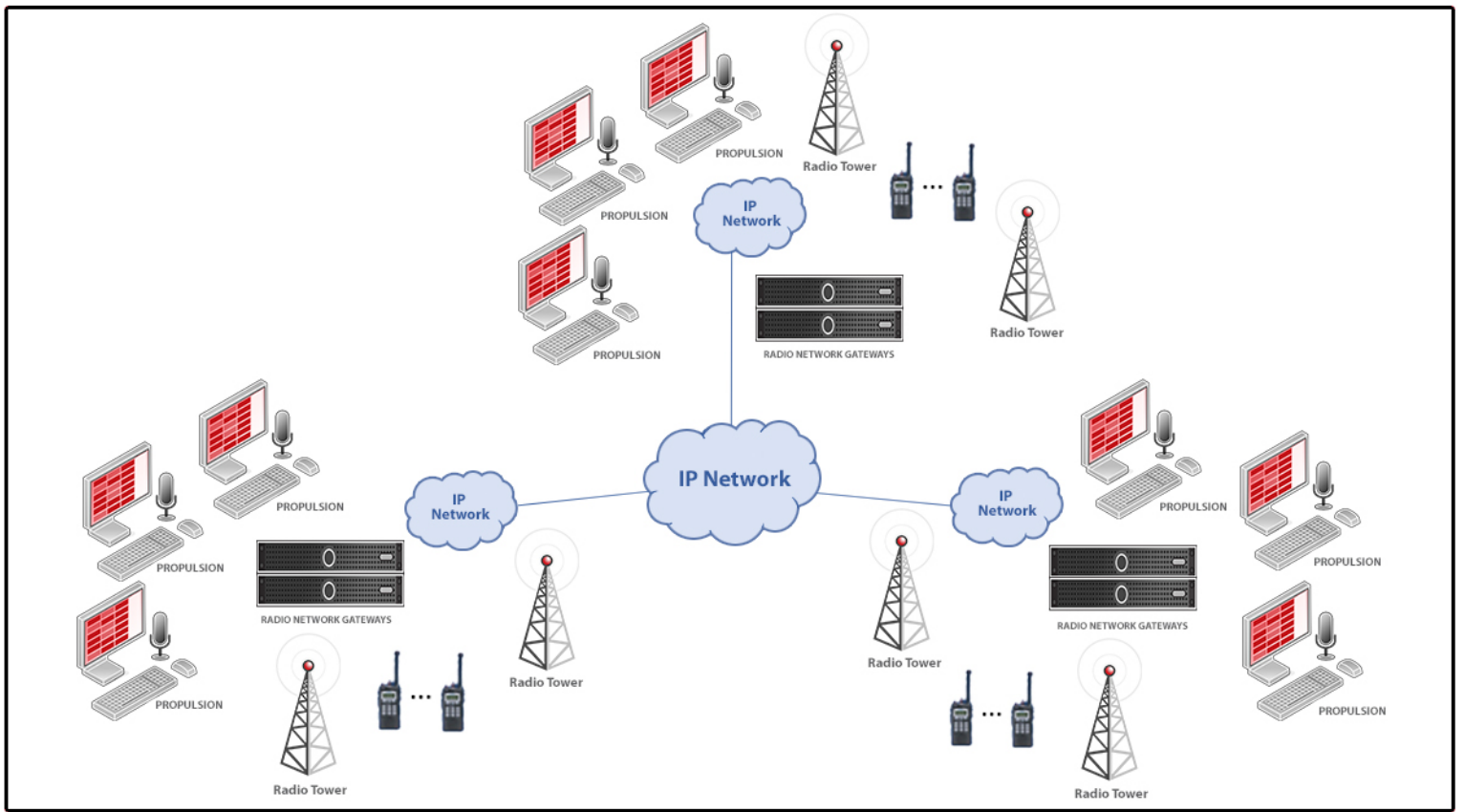
## Background :

**Federal Land Management agencies are responsible for managing hundreds of millions of acres of public lands and national park systems. This entails oversight and protection of energy development, wildlife, livestock, recreation and timber harvesting while ensuring natural, cultural, and historic resources are maintained and conserved for present and future use. As such, this requires both pre-planned and adhoc coordination amongst multiple agencies across wide geographic areas of coverage.**

## Client's Critical Challenges:

- **Rapidly approaching obsolescence of their primary dispatch communications systems**
- **Lacking mobile, transportable dispatch communications capabilities**
- **No operational redundancy between their multiple regional dispatch centers**
- **Challenging inter-agency interoperability**

# Case Study – Catalyst Communications Partners With Federal Land Management Agencies



## Catalyst's Solution:

- **Wide-area, operationally redundant, IP based systems with over 50 permanent dispatch console positions dispersed across multiple dispatch centers**
- **Multiple mobile command systems which were fully integrated into the customer's primary console systems**
- **Redundant, all IP communications infrastructure**
- **Automatic Wireless WAN failover capabilities, ensuring that the "backhoe" effect would not hinder operations**
- **Highly configurable user interface layouts providing primary dispatchers and mobile command coordinators customized user interfaces for any user's need**
- **The ability for a dispatcher to easily connect simultaneously to any of over 100 gateways, which was critical to the success of the system**

For further information please contact us at 434-582-6146 or Email: [info@catcomtec.com](mailto:info@catcomtec.com)

## Benefits:

- **Effective inter-agency communications**
- **Redundancy and backup across all command centers**
- **Cost savings through issuing dispatch clients to field personnel rather than radios**
- **Cost reduction through elimination of leased lines for remote sites**
- **Simultaneous communications between all dispatch positions and all radio systems**

