

# Incident Commander Element: ICE™

**ICE™ - Incident Commander Element** - is an integrated solution for on-scene voice communications. Up to three multi-band radios can be controlled from a single hardened laptop, and patched in any combination for Project 25 (P25), EDACS, MDC-1200, etc.

**ICE™** provides transportable radio communications, command, and control where radio communications is spotty or does not exist. Typically, these applications include incident command for geographies with poor radio communications or for in-building incidents – especially fire – where radio communications may be compromised.

**ICE™** is specifically designed to work with Harris mobile radios and is especially well suited to the multi-band XL-200M radio, providing Project 25 (P25) digital and conventional analog on VHF, UHF-L, UHF-H and 700/800 MHz bands. These units provide enhanced graphics and control for radio voice communications across multiple frequency bands and multiple types of radio systems including Project 25, EDACS™, MDC 1200, and conventional.

**ICE™** provides essential information for fire ground, emergency medical, special rescue, utility restoration, and other public safety and critical infrastructure incidents. A single computer, including a laptop, is all that is needed to control up to four mobile radios and provide the control and user interface that can be

operated in stand-alone mode or linked back to the agency's primary radio system and to other radio channels as needed.

This rugged, compact, and efficient solution can be purchased in a robust travel case or installed in a vehicle.



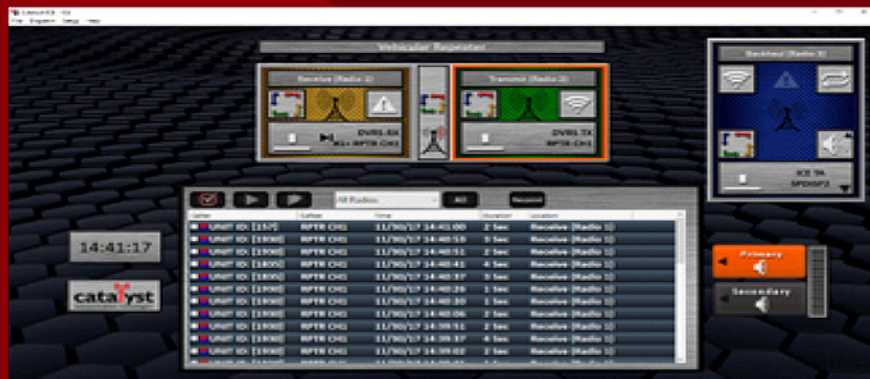
## Catalyst ICE™ System Advantages

### INTEGRATED:

- Instant Call Recorder
- Call History
- Unit ID
- Emergency Signaling
- Alert Messages
- Simple Operation
- Flexible Configurations
- Scan Low Band to 800 MHz



## Digital Repeater Application – Enhancing Fire Ground Operations



## Flexible Applications for Incident Command

Especially useful for fire incidents, these units, as a combined digital repeater and incident command, provide for the ability of First Responders to better communicate in a number of important ways:

- Incident Commander outside the building to First Responders in the building.
- First Responders to First Responders within the building.
- First Responders emergency call (via emergency button) both inside and outside of the building to the Incident Commander and the subsequent audio to other First Responders both inside and outside the building.
- Support for communications between Portable and Mobile Subscriber Units on the Fire Ground that are programmed for the selected conventional frequency pair with limitation on the number of units or radio manufacturer.
  - Dispatch console operators can monitor communications within the trunked radio system's coverage area from dispatch consoles on the system.

In this application, ICE™ is configured with three mobile radios. In this operational mode, two of the radios are operational in a “repeater” mode and one is operational in full P25 trunking mode. One radio is operating in transmit only mode (single frequency used for TX) and one radio is operating in receive only mode (single frequency is used for RX). These units use software to route the audio as needed to replicate “repeater” mode for the Fire Talk Group. In this mode, ICE™ can allow full featured trunking and repeater operation and can patch the two to allow fire ground communications to be linked to the trunked LMR system for access by dispatch consoles and other trunked radio talk groups.

## Powerful Controls

- ICE™ dynamically manages the flow of audio so syllables are not lost.
- ICE™ records the voice locally. Download later to a logging recorder.
- ICE™ stores call records for both talk around and trunked calls.



Catalyst Communications Technologies  
107 Vista Centre Drive  
Forest, VA 24551

Phone: 1 (434) 582-6146  
Support: info@catcomtec.com

www.catcomtec.com